



**namaskar**

**Presentation on  
Revision of Threshold Value of Minerals  
(Limestone)**

**by**

**LANJIBERNA LIMESTONE**

**&**

**DOLOMITE MINES**

**OCL INDIA LIMITED**

**A GROUP COMPANY OF DALMIA BHARAT  
(CEMENT) LTD**



# OUR PRESENCES



- OCL India Limited is the flag ship company of 'Dalmia Group' of companies.
- Dalmia Bharat is the 4th largest and the fastest growing cement manufacture company in India today.
- The Group's manufacturing facilities are spreads across 11 locations in 8 Indian states with an installed capacity of 25 million tonnes per annum.
- The Group addresses the growing demand for cement across 23 states in India, with special focus on East India Comprising states like Odisha, West Bengal, Jharkhand, Bihar and North Eastern India.
- It is also servicing attractive markits in South India, spanning states like Tamil Nadu, Karnatake, Kerala, Andhra Pradesh and Maharastra.





# HISTORY OF THE MINES

- Lanjiberna Mines operation is started in the year 1951
- **1951 to 1964**: Mining Operation under Manual Method
- **1965 to 1979**: Mining operation under Semi-mechanized method
- **1980 to 2009**: Mining operation under Mechanized method
- **2010 onwards**: Mining operation under highly mechanized method





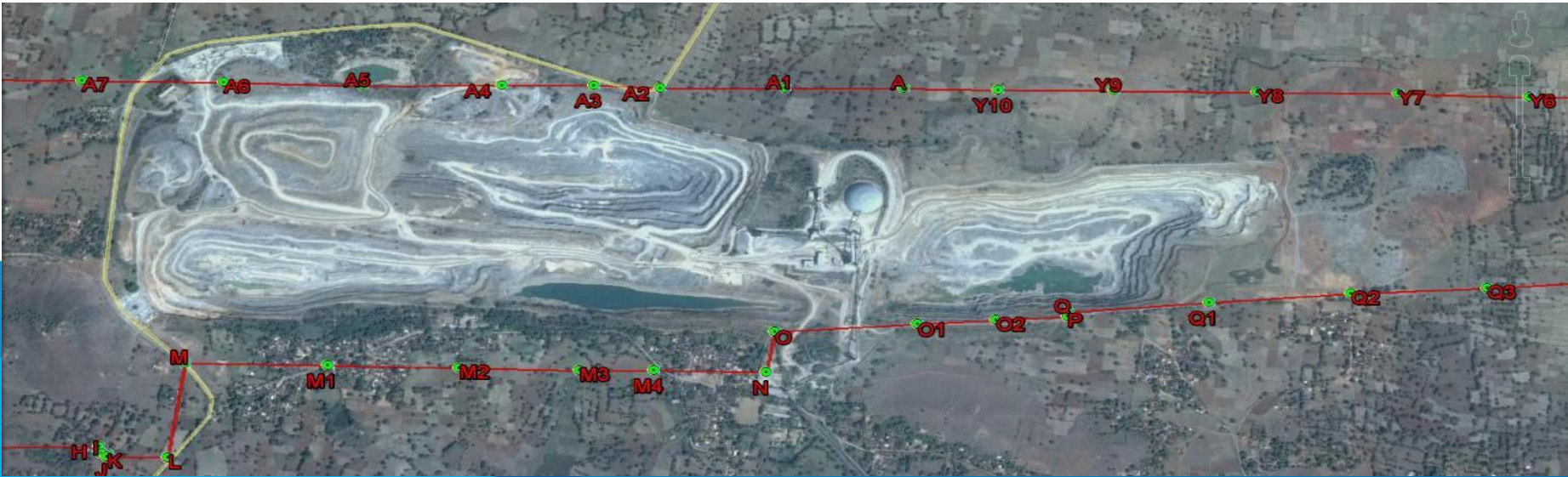
## DESCRIPTION OF THE MINES



- DoB of ML :- Year 1951
- ML area:- 873.057 Hect
- Total Surface Right Area:- 333.43 Hect



# SATELLITE VIEW



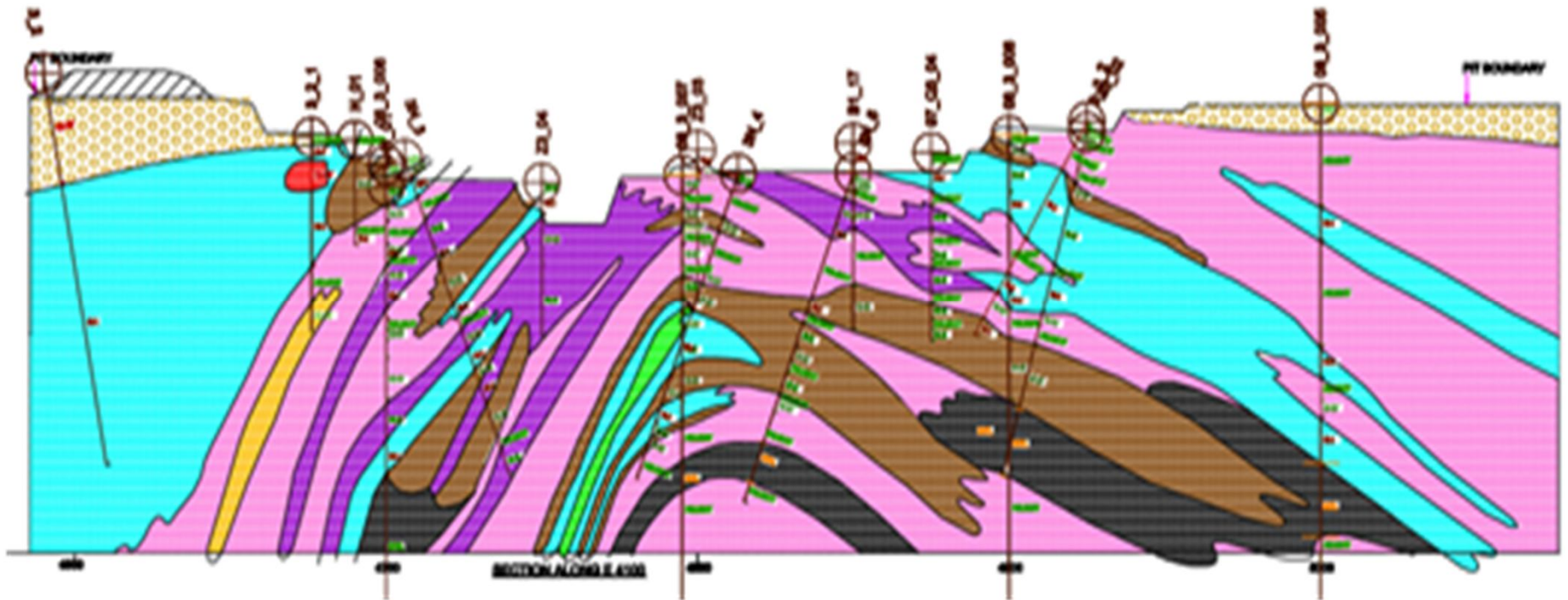


# GEOLOGICAL STRUCTURES





# A TYPICAL GEOLOGICAL SECTION



Limestone Gr-1

Limestone Gr-2

Limestone Gr-3

Reject

Dolomite



## PHYSICO-MECHANICAL PROPERTIES OF LIMESTONE OF LANJIBERNA MINES

PROPERTIES	VALUES
Compressive Strength ( mpa)	70-150
Abrasive Index ( cerchar)	2.35-2.50
Density ( Kg/ m3)	2596





## MAGNESIA PERCENTAGE IN DIFFERENT CEMENT PRODUCTS AS PER BIS NORMS

Cement Products	MgO %
OPC	6
PPC	6
PSC	10



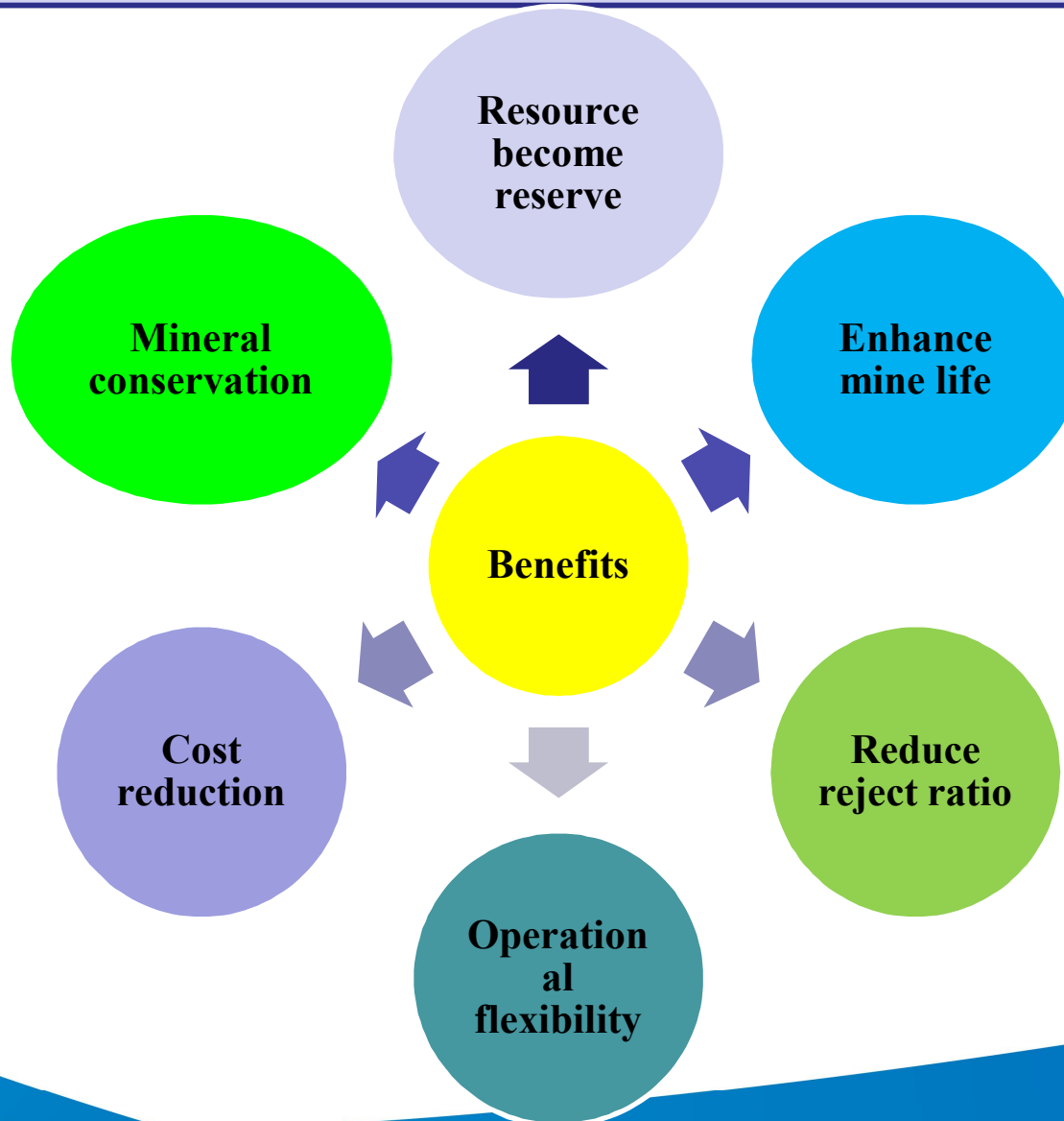
# OUR VIEWS

Time to move from constant threshold value of MgO to flexible one in line with different cement product shown as below.

<b>GRADE</b>	<b>MgO % (In present Threshold value of Limestone )</b>	<b>Proposed Threshold value (MgO) of Limestone</b>
OPC	4% (Max)	4%
PPC		4%
PSC		5.0- 5.5%



# BENEFITS



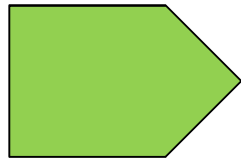


## SPECIFIC BENEFITS IN OUR CASE

Areas	As per present THV	Proposed value MgO 5%	Proposed value MgO 5.5%
Resource as reserve	-	Enhance in reserve by 15%	Enhance in reserve by 33%
Enhance mine life	21 Years	26 Years	33 Years
Reduce reject ratio	81%	71%	46%
Operational flexibility	-	Reduction of machinery use by 5%	Reduction of machinery use by 24%
Cost reduction	-	Cost will reduce by Rs7/ Tons	Cost will reduce by Rs23/Tons



## SUGGESTIONS



MgO Threshold Value in Limestone may be enhanced to 5.0-5.5%



THANK YOU

**Journey Continues.....**

